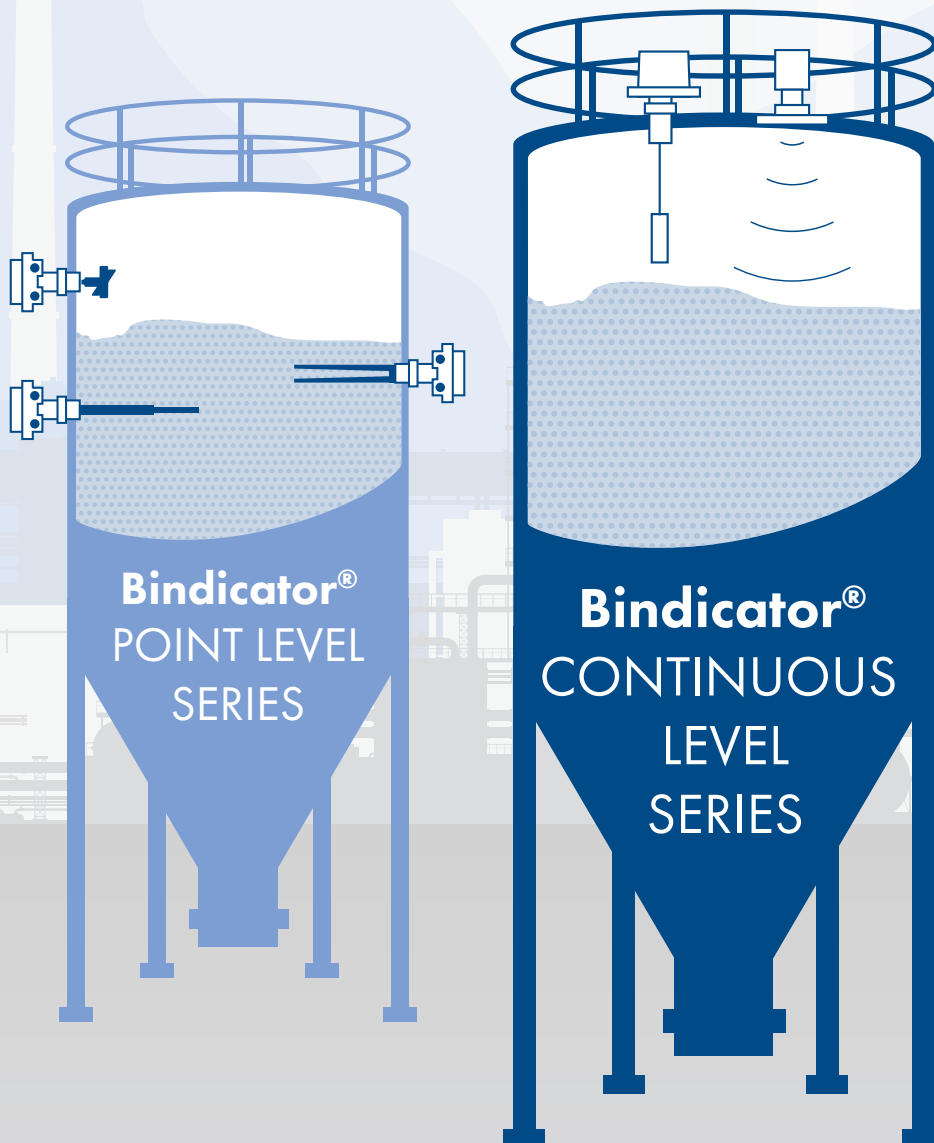




BULK LEVEL MEASUREMENT

Bindicator® is a full service supplier of point and continuous level sensors for industrial applications. Since 1936, our bin level indicators have been preventing overflow spills, controlling surge bins, detecting plugged chutes and providing on/off control of pumps and conveyors in the dry bulk industry. Bindicator® products are designed and manufactured with the end user in mind, so installation and calibration will be straightforward and simple. Our level instruments are designed so that they can be customized with the options that customers need for the most challenging applications.



COMPLETE

Bindicator® offers a full line of level measurement devices and accessories to make monitoring material as efficient and easy as possible.

SIMPLE

Bindicator®, with a network of trained representatives in more than 40 countries worldwide, is committed to providing superior service and support to all of our customers.

Our products are easy to install, easy to use, and easy to maintain.

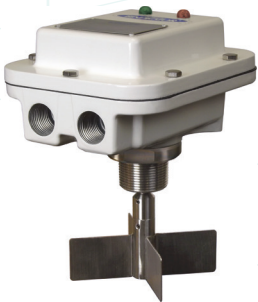
RELIABLE

Bindicator® has been providing quality bin level indicators to the dry bulk industry since 1936. Our commitment to investment in R&D will continue the legacy of Bindicator® reliability as new products continue to launch.

Bindicator® offers a full range of point and continuous level measurement products. Our point level products, such as the Roto-Bin-Dicator® PRO paddlewheel and the VRFII® Series capacitance probe, are on/off devices with relay or switch outputs. Point level sensors indicate when material in a vessel is present or absent at a specific point. These durable, simple devices require little to no maintenance and are easy to install and set up.

Our continuous level measurement products monitor the level of material in a vessel continuously as it rises and falls. Bindicator® has a variety of products available such as TDR2000 guided wave radar, Yo-Yo™ Series cable and weight and MP Series through-air radar.

PRODUCTS WE OFFER



POINT LEVEL

These on/off switch devices are used when you need to know if the material in a vessel has reached a specific point. This prevents overflows or shortages of material.



COMMUNICATION DEVICES

Inventory management is very important in the dry bulk level measurement industry. Whether a supplier, an in-process facility or even a single-vessel application, inventory management will help improve business flow.



CONTINUOUS LEVEL

These sensors monitor the level of material continuously during the filling/emptying process. Options include contact and non-contact devices. Continuous level sensors are ideal for situations where the amount of material needs to be known regularly.



DRY FLOW

Bindicator® supplies aerators and broken bag detectors to keep material moving and flowing.